

Sun Surveillance

2024-2025 PRODUCT CATALOG



Contents

ABOUT US **2**

ACROSS THE GLOBE **5**

SOLAR **7**

Solstice Pole 8

Solstice Kit 10

Solstice Light 12

BATTERY / AC / POLES **15**

PowerBridge 16

AC Pole 18

Sectional Pole 20

Hinged Pole 22

MOBILE UNITS **25**

Solstice Trailer 26

Solstice H-Base 28

Sun Surveillance **ABOUT US**

FOUNDED IN 2004, SUN SURVEILLANCE HAS STEADILY GROWN FROM PRODUCING SOLAR-POWERED WIRELESS CAMERA POLE SYSTEMS TO BECOMING A LEADING PROVIDER OF OUTDOOR SECURITY SOLUTIONS. We are committed to powering a diverse array of security requirements, from surveillance systems to communication networks, security lighting, and beyond, innovating continuously to meet the evolving demands of physical security infrastructure.



OUR MISSION

To simplify project design and implementation of electronic security solutions globally.



OUR VISION

To be the premier one-stop integration partner for all outdoor security technology.



OUR VALUES

Love, joy, peace, patience, kindness, gentleness, and self-control. We aim to treat our customers the way we want to be treated.



Sun Surveillance



Serving Customers

ACROSS THE GLOBE

SUN SURVEILLANCE HAS SYSTEMS DEPLOYED ACROSS THE GLOBE.

We specialize in producing systems robust enough to withstand extreme desert heat to extreme arctic climates. We partner with security integrators and security consultants to protect some of the world's most valuable assets. To us, there is no project too big or too small.



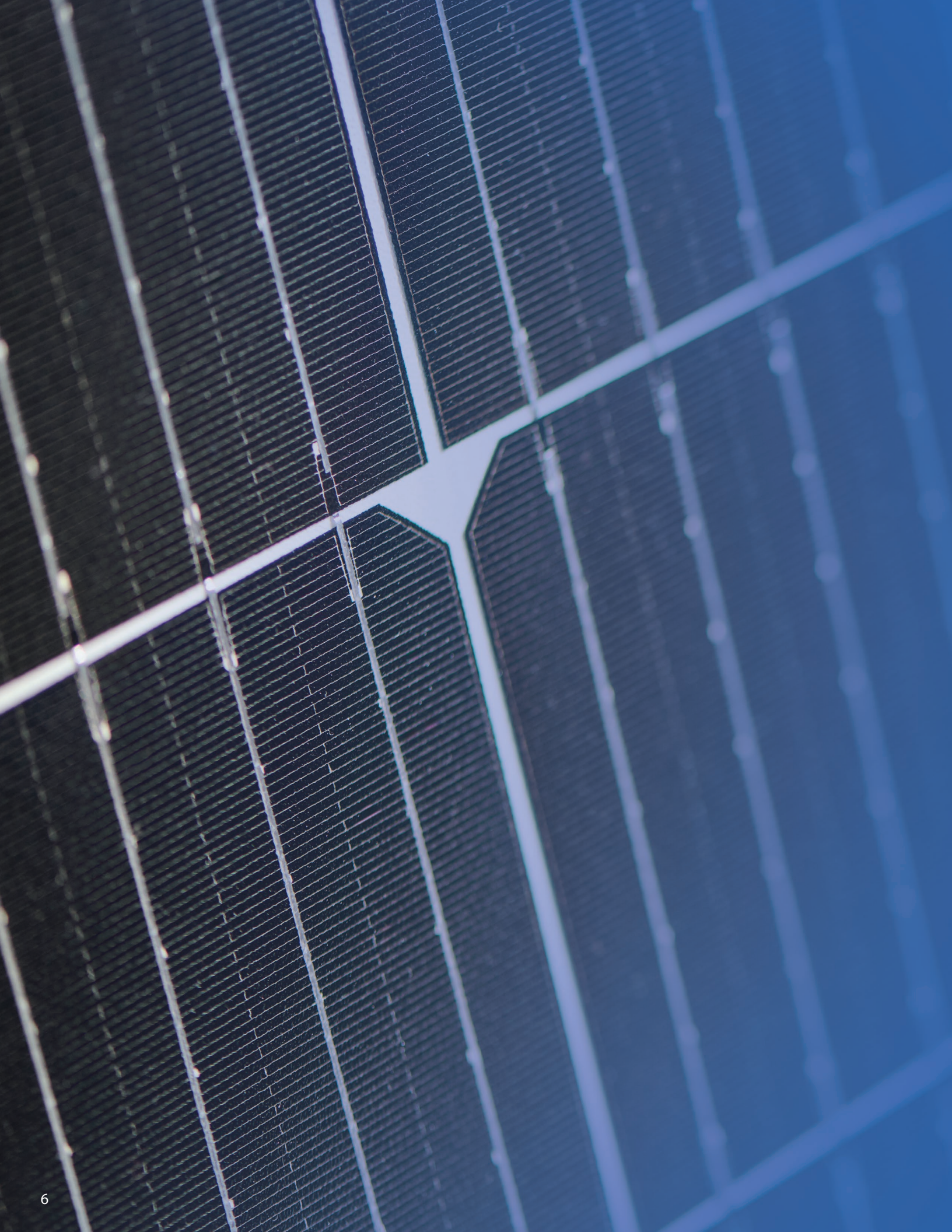
**24 / 7 / 365
GUARANTEE**



**QUICK & SEAMLESS
CUSTOMIZATION**



**20+ YEARS OF
RELIABLE EXPERTISE**



SOLAR

Solstice Pole	8
Solstice Kit	10
Solstice Light	12

Solstice Pole

Turnkey pole and solar solution for any camera and wireless communications

The **Solstice Pole** solar-powered wireless surveillance system can be installed nearly anywhere, and gives complete control of your cameras from anywhere in the world.

Compatible with virtually any IP camera, radar, or speaker/horn on the market. Ideal for remote video surveillance, including perimeter security for government and industrial facilities, railways, parks, construction yards, and parking lots.

All **Solstice Pole** systems are backed by our performance warranty, giving you the confidence that your system will be available when you need it.

Options

- Remote Health Monitoring
- IR Illuminator: Various distances and angles
- Strobe Light: White, Blue, Green, Red
- **Amplified Speaker:** 10 watt amplifier and speaker
- Powder Coating: Full selection of RAL colors

Cameras, Horns, or Radar

We power your favorite combination of IP cameras and IP devices.

Avigilon, Axis, Bosch, FLIR, Genetec, Hanwha, i-Pro, Mobotix, Pelco, Rhombus, Verkada, Vivotek, and many more

Custom configurations are available for cameras not listed above.

Pole

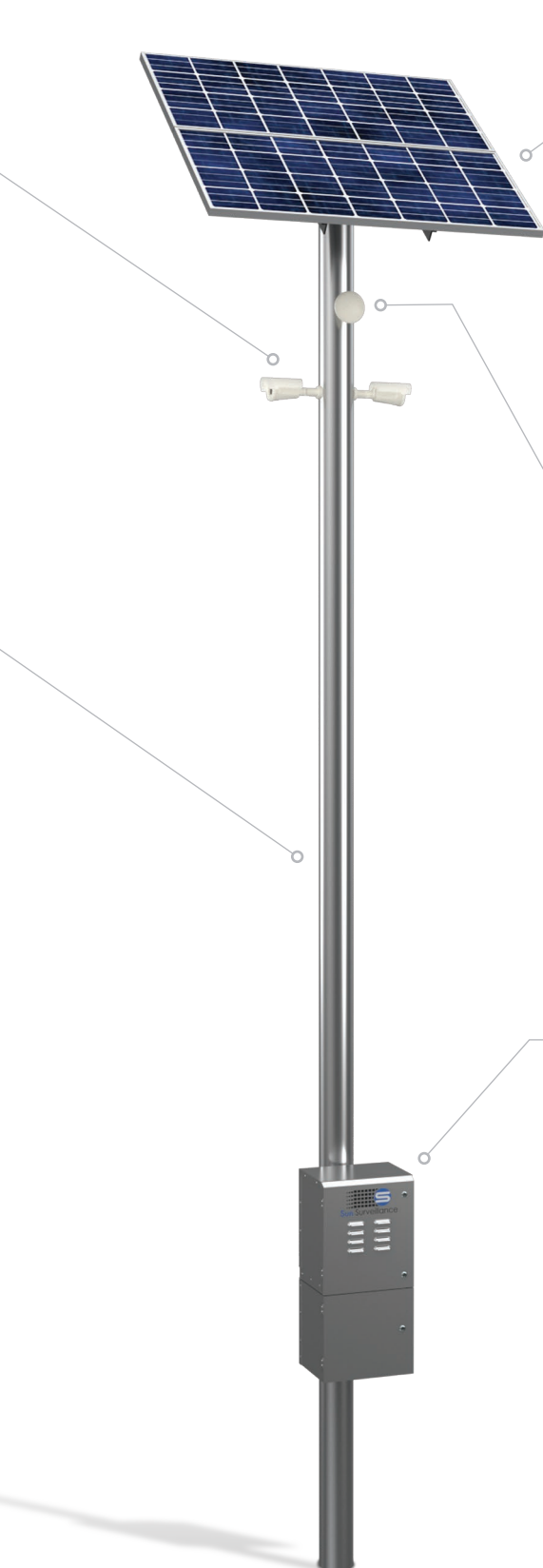
All of our poles are aluminum and corrosion resistant.

Direct Burial, Sectional, Aluminum Pole: The 20' x 6.5" diameter (7m x 165mm) or 20' x 4.5" diameter (7m x 114mm) pole includes two sections: a 12' (3.5m) main section and an 8' (2.5m) base section. The base section is installed 4' (1.2m) below ground, leaving 16' (5m) total above ground.

Hinged Aluminum Pole: The pole is hinged at the base for an extremely easy installation. The hinged pole comes in two standard sizes: 16' x 6" diameter (5m x 152mm) and 20' x 6" diameter (7m x 152mm.) Custom lengths below 20' (7m) can be requested.

Your Pole: All Sun Surveillance components are designed to mount to any flat surface or pole 4.5" (114mm) or greater.

Custom configurations are available for cameras not listed above.



Solar Panels

Solar panel size can range depending on the need for smaller or larger panels.

- Mono-crystalline silicon solar cell
- High transparency, low-iron, tempered glass
- Heavy-duty, anodized frames
- Rugged design to withstand high wind pressure, hail, and snow load

Solar panels vary in size and wattage based on geographical location and load.

Wireless

Choose your wireless radio from your favorite provider.

Point to Point	Point to Multipoint	Mesh	Cellular*	Satellite
2.4 GHz	2.4 GHz	2.4 GHz	5G	Starlink ©
5.8 GHz	5.8 GHz	5.8 GHz	4G / LTE	

**System is designed for your preferred wireless solution.*

Modular Enclosure

The NEMA 3R enclosure is made of **5052 Aircraft Grade Aluminum**, and is extremely corrosion resistant.

Electronics: All **Solstice Pole** systems are comprised of high quality, industrial grade components and can withstand the most extreme environments. Components include but are not limited to: charging circuit, overload protection, and power supplies.

Batteries: Deep Cycle Gel standard with Lithium available. Absorbent glass mat, sealed lead acid. The battery bank and solar array are sized to provide continuous power **365** days a year.

Solstice Kit

Solar solution for an existing pole

The **Solstice Kit** like our Solstice Pole can be installed nearly anywhere, and gives complete control of your cameras from anywhere in the world. The main difference is the Solstice Kit is designed to mount on your existing pole or any new pole of your choice.

All **Solstice Kit** systems are backed by our performance warranty, giving you the confidence that your system will be available when you need it.

Options

- Remote Health Monitoring
- IR Illuminator: Various distances and angles
- Strobe Light: White, Blue, Green, Red
- **Amplified Speaker:** 10 watt amplifier and speaker
- Powder Coating: Full selection of RAL colors

Cameras, Horns, or Radar

We power your favorite combination of IP cameras and IP devices.

Avigilon, Axis, Bosch, FLIR, Genetec, Hanwha, i-Pro, Mobotix, Pelco, Rhombus, Verkada, Vivotek, and many more

Custom configurations are available for cameras not listed above.

Solar Panels

Solar panel size can range depending on the need for smaller or larger panels.

- Mono-crystalline silicon solar cell
- High transparency, low-iron, tempered glass
- Heavy-duty, anodized frames
- Rugged design to withstand high wind pressure, hail, and snow load

Solar panels vary in size and wattage based on geographical location and load.

Existing Pole

Mounts to your existing pole.

The **Solstice Kit** is compatible with poles 4.5" (114mm) in diameter or greater, with included standard mounting hardware. Specify pole diameter and type (square, round, etc.) when ordering to ensure an exact fit for your application. External wiring is also included, reducing field prep and setup time.



Wireless

Choose your wireless radio from your favorite provider.

Point to Point	Point to Multipoint	Mesh	Cellular*	Satellite
2.4 GHz	2.4 GHz	2.4 GHz	5G	Starlink ©
5.8 GHz	5.8 GHz	5.8 GHz	4G / LTE	

**System is designed for your preferred wireless solution.*

Conduit

Our conduit assembly comes standard on all Solstice Kits.

The conduit assembly comes pre-assembled with water tight fittings, mounting hardware to easily strap to your pole, and all relevant networking and power cable specified for your system pre-pulled through the 5ft conduit sections. All high quality networking cables are pre-terminated with RJ-45 connectors for a seamless and rapid installation.

Standard assembly lengths range from 5' to 20' depending on your needs.

Modular Enclosure

The NEMA 3R enclosure is made of **5052 Aircraft Grade Aluminum**, and is extremely corrosion resistant.

Electronics: All **Solstice Kit** systems are comprised of high quality, industrial grade components and can withstand the most extreme environments. Components include but are not limited to: charging circuit, overload protection, and power supplies.

Batteries: Deep Cycle Gel standard with Lithium available. Absorbent glass mat, sealed lead acid. The battery bank and solar array are sized to provide continuous power **365** days a year.

Solstice Light

All-in-one solar lights and cameras

The **Solstice Light** solar-powered lighting system can be installed nearly anywhere as a turnkey solution.

All **Solstice Light** systems are backed by our performance warranty, giving you the confidence that your lights will be on when you need them most.

Our optional smart lighting controls allow you to remotely adjust lighting outputs and monitor the health of your lights from anywhere in the world.

Options

- Powder Coating: color options



Other colors available upon request.

- Extension Arm for Light/s:



Lights

LED Light Mount

Lumens: 9500

LLF: 1.000

Units: Fc | Average: 0.46 | Max: 4.3

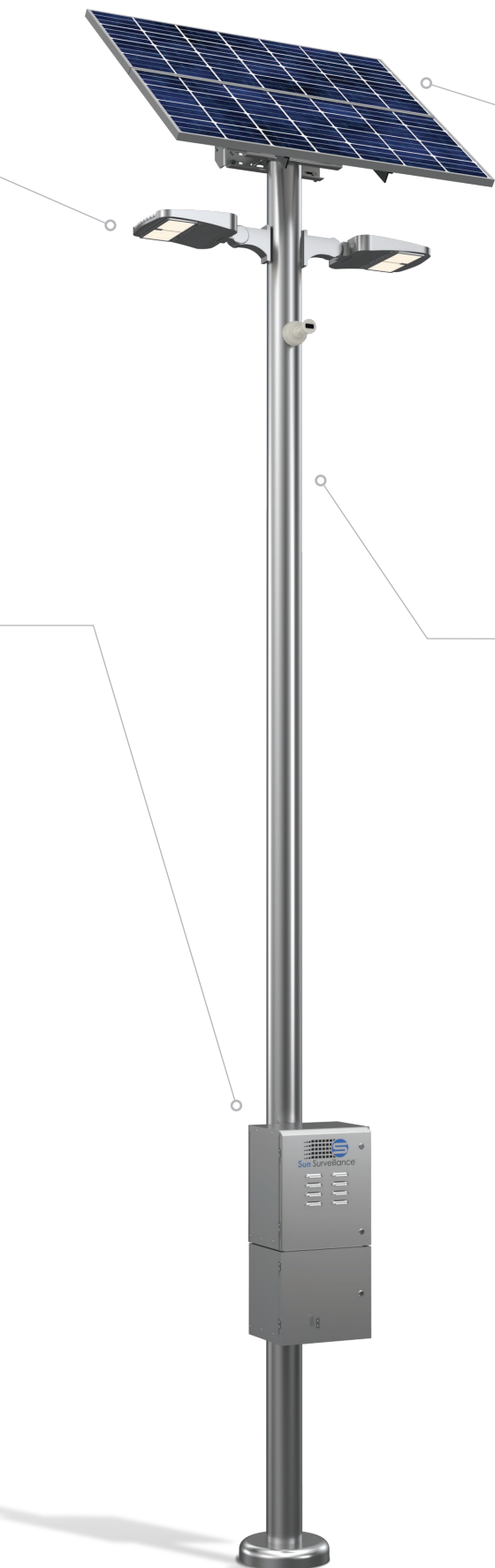
Optional Motion Sensor

Modular Enclosure

The NEMA 3R enclosure is made of **5052 Aircraft Grade Aluminum**, and is extremely corrosion resistant.

Electronics: All **Solstice Light** systems are comprised of high quality, industrial grade components and can withstand the most extreme environments. Components include but are not limited to: charging circuit, overload protection, and power supplies.

Batteries: Deep Cycle Gel standard with Lithium available. Absorbent glass mat, sealed lead acid. The battery bank and solar array are sized to provide continuous power **365** days a year.



Solar Panels

Solar panel size can range depending on the need for smaller or larger panels.

- Mono-crystalline silicon solar cell
- High transparency, low-iron, tempered glass
- Heavy-duty, anodized frames
- Rugged design to withstand high wind pressure, hail, and snow load

Solar panels vary in size and wattage based on geographical location and load.

Pole

All of our poles are aluminum and corrosion resistant.

Direct Burial, Sectional, Aluminum Pole:

- 20' (6.096m) pole includes two sections: a 12' (3.5m) main section and an 8' (2.5m) base section. The base section is installed 4' (1.2m) below ground, leaving 16' (5m) total above ground.
- 25' (7.62m) pole includes two sections: a 15' (4.572m) main section and an 10' (3.048m) base section. The base section is installed 4' (1.2m) below ground, leaving 21' (6.4008m) total above ground.
- 30' (9.144m) pole includes two sections: a 20' (6.096m) main section and an 10' (3.048m) base section. The base section is installed 4' (1.2m) below ground, leaving 26' (7.9248m) total above ground.

Sectional poles are available in either 6.5" diameter (7m x 165mm) or 20' x 4.5" diameter (7m x 114mm)

Hinged Poles: The pole is hinged at the base for an extremely easy installation. The hinged pole comes in two standard sizes: 16' x 6" diameter (5m x 152mm) and 20' x 6" diameter (7m x 152mm.) Custom lengths below 20' (7m) can be requested.

Mounting: All Sun Surveillance components are designed to mount to any flat surface or pole 4.5" (114mm) or greater.

SUN SURVEILLANCE



BATTERY/ AC/POLES

PowerBridge	16
AC Pole	18
Sectional Pole	20
Hinged Pole	22

PowerBridge

Daytime power for night-lit poles

The **PowerBridge** is designed to bridge the gap of power during the day when power is not present on a parking lot light pole because the power is remotely controlled from the building with a timer or a parent photocell. The PowerBridge can provide continuous power for security equipment for less cost than is typically associated with a solar system.

Compatible with a wide range of voltages, and can power all the same equipment as our solar solutions. The **PowerBridge** comes standard with overload surge protections while providing clean power to preserve your investment.

All **PowerBridge** systems are backed by our performance warranty, giving you the confidence that your system will be available when you need it.

Options

- Remote Health Monitoring
- IR Illuminator: Various distances and angles
- Strobe Light: White, Blue, Green, Red
- **Amplified Speaker:** 10 watt amplifier and speaker
- Powder Coating: Full selection of RAL colors

Intermittent Power

The **PowerBridge** provides continuous power for security equipment when power is not present on the pole during the daytime hours.

Input power: 120/240/277/480VAC
nominal supported

Cameras, Horns, or Radar

We power your favorite combination of IP cameras and IP devices.

Avigilon, Axis, Bosch, FLIR, Genetec, Hanwha, i-Pro, Mobotix, Pelco, Rhombus, Verkada, Vivotek, and many more

Custom configurations are available for cameras not listed above.

Existing Pole

Mounts to your existing pole.

The **PowerBridge** is compatible with poles 4.5" (114mm) in diameter or greater, with included standard mounting hardware. Specify pole diameter and type (square, round, etc.) when ordering to ensure an exact fit for your application. External wiring is also included, reducing field prep and setup time.



Wireless

Choose your wireless radio from your favorite provider.

Point to Point	Point to Multipoint	Mesh	Cellular*	Satellite
2.4 GHz	2.4 GHz	2.4 GHz	5G	Starlink ©
5.8 GHz	5.8 GHz	5.8 GHz	4G / LTE	

**System is designed for your preferred wireless solution.*

Conduit

Our conduit assembly comes standard on all PowerBridge systems.

The conduit assembly comes pre-assembled with water tight fittings, mounting hardware to easily strap to your pole, and all relevant networking and power cable specified for your system pre-pulled through the 5ft conduit sections. All high quality networking cables are pre-terminated with RJ-45 connectors for a seamless and rapid installation.

Standard assembly lengths range from 5' to 20' depending on your needs.

Modular Enclosure

The NEMA 3R enclosure is made of **5052 Aircraft Grade Aluminum**, and is extremely corrosion resistant.

Electronics: All **PowerBridge** systems are comprised of high quality, industrial grade components and can withstand the most extreme environments. Components include but are not limited to: charging circuit, overload protection, and power supplies.

Batteries: Deep Cycle Gel standard with Lithium available. Absorbent glass mat, sealed lead acid. The battery bank and solar array are sized to provide continuous power **365** days a year.

AC Pole

Security-ready, prewired camera pole

Elevate your surveillance infrastructure with the **AC Pole** solution. Tailored for efficiency and designed with a focus on seamless integration, this system ensures clean integration with your security devices.

Your **AC Pole** will arrive on site ready to connect, power, and mount your cameras. Our turnkey **AC Pole** will save you thousands of dollars between the quoting, purchasing, integrating, wiring, terminating and completing your project on time.

With our project design and quoting software we can quickly design all of our systems by simply selecting the cameras and wireless equipment that you want to power and our system selects all necessary power supplies.

Cameras, Horns, or Radar

We power your favorite combination of IP cameras and IP devices.

Avigilon, Axis, Bosch, FLIR, Genetec, Hanwha, i-Pro, Mobotix, Pelco, Rhombus, Verkada, Vivotek, and many more

Custom configurations are available for cameras not listed above.

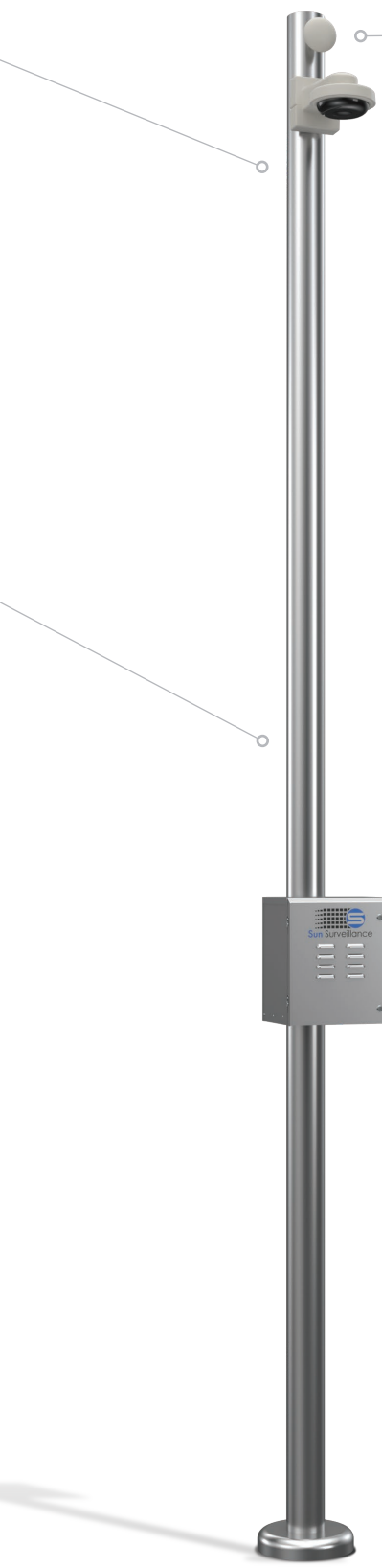
Pole

All of our poles are aluminum and corrosion resistant.

Direct Burial, Sectional, Aluminum Pole: The 20' x 6.5" diameter (7m x 165mm) or 20' x 4.5" diameter (7m x 114mm) pole includes two sections: a 12' (3.5m) main section and an 8' (2.5m) base section. The base section is installed 4' (1.2m) below ground, leaving 16' (5m) total above ground.

Hinged Aluminum Pole: The pole is hinged at the base for an extremely easy installation. The hinged pole comes in two standard sizes: 16' x 6" diameter (5m x 152mm) and 20' x 6" diameter (7m x 152mm.) Custom lengths below 20' (7m) can be requested.

Your Pole: All Sun Surveillance components are designed to mount to any flat surface or pole 4.5" (114mm) or greater.



Wireless

Choose your wireless radio from your favorite provider.

Point to Point	Point to Multipoint	Mesh	Cellular*	Satellite
2.4 GHz	2.4 GHz	2.4 GHz	5G	Starlink ©
5.8 GHz	5.8 GHz	5.8 GHz	4G / LTE	

**System is designed for your preferred wireless solution.*

Modular Enclosure

The NEMA 3R enclosure is made of **5052 Aircraft Grade Aluminum**, and is extremely corrosion resistant.

Electronics: All **AC Pole** systems are comprised of high quality, industrial grade components and can withstand the most extreme environments. Components include but are not limited to: network switches, media converters, PoE injectors, overload protection, and power supplies.

Sectional Pole

Extra-strength for added camera stability

Sectional Poles are designed to provide an affordable and flexible mounting solution, allowing installation with less effort than other direct-burial poles.

The poles are constructed of schedule 40 extruded Aluminum, giving strength with corrosion resistance. They come prewired with all cables internally routed, giving the system added protection from both vandalism and the environment.

Material

6000 Series Aluminum Alloy
Grade 6061 T6, Schedule 40

Ultimate tensile strength:

*45,000 psi (310 MPa) typical

Tensile yield strength:

*40,000 psi (276 MPa) typical

**Data provided by the Aluminum Association, Inc. and are not for design purposes.*

Properties

Pole Type: Direct-burial

Cross Section: Round

Finish: Satin-brushed finish

Wiring: Prewired with internal cable routing for added security. Main section rotates 360° to facilitate solar panel and camera alignment during installation and is secured in place with 3/8" set screws.



Specifications

	SS-20DBP-4.5-AL-R-NT	SS-20DBP-6-AL-R-NT
Dimensions*	Overall: 20' x 4.5" diameter, 0.237" wall (7m x 114mm)	Overall: 20' x 6.625" diameter, 0.28" wall (7m x 168mm)
	Main Section: 12' (3.5m)	Main Section: 12' (3.5m)
	Base Section: 8' (2.5m)	Base Section: 8' (2.5m)
	Coupler: 12" (305mm)	Coupler: 12" (305mm)
Weight	81 lbs. (37kg)	147 lbs. (67kg)

WIND LOAD DATA

90 mph	27 EPA (ft ²)	33.6 EPA (ft ²)
110 mph	17 EPA (ft ²)	21.2 EPA (ft ²)
120 mph	14 EPA (ft ²)	17.5 EPA (ft ²)
140 mph	9.5 EPA (ft ²)	11.8 EPA (ft ²)

**Custom lengths can be requested.*

**Sun Surveillance reserves the right to change the specifications without notice. EPA calculations based on 1.3 gust factor and assumes top of pole fixture mounting height.*

Hinged Pole

Providing easy access to your cameras

Hinged Poles provide an affordable, robust, and lightweight solution. Featuring a unique hinged base design allowing for easy installation.

The poles are constructed of tempered 6063 aluminum, giving strength and corrosion resistance to withstand even the most extreme environments. Comes prewired with all cables internally wired, giving the system added protection from both vandalism and the elements.



Material

6000 Series Aluminum Alloy Grade 6061 T6, Schedule 40

Ultimate tensile strength: *45,000 psi (310 MPa) typical

Tensile yield strength: *40,000 psi (276 MPa) typical

**Data provided by the Aluminum Association, Inc. and are not for design purposes.*

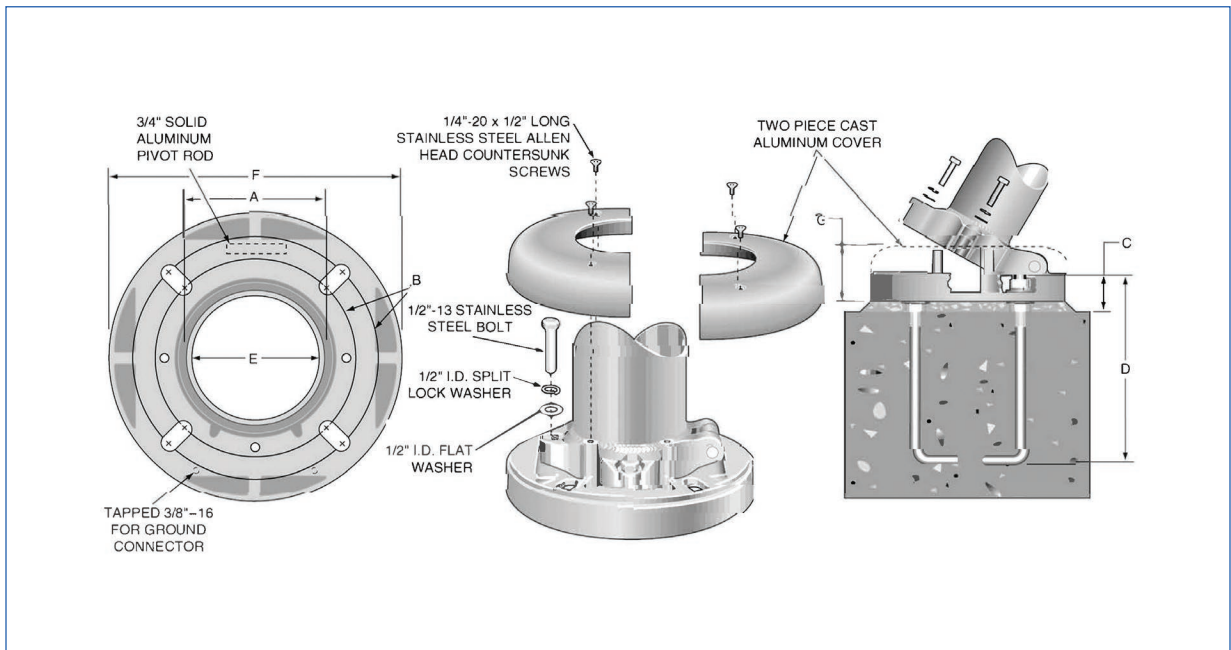
Hinged Mount

The pole hinges at the base for an extremely easy installation.

The hinged pole comes in two standard sizes:

16' x 6" diameter (5m x 152mm) and 20' x 6" diameter (7m x 152mm).

Custom lengths below 20' (7m) can be requested.





MOBILE UNITS

Solstice Trailer 26

Solstice H-Base 28

Solstice Trailer

Mobile solar trailer for any camera

The **Solstice Trailer** solar-powered wireless surveillance system is designed to dynamically extend your security on demand.

The EZ-Lift manual winch quickly raises the telescoping pole, providing a clear and stable vantage point with complete control of your cameras from anywhere in the world.

All **Solstice Trailer** systems are backed by our performance warranty, giving you the confidence that your system will be available when you need it.

Options

- Remote Health Monitoring
- GPS Location
- IR Illuminator: Various distances and angles
- Strobe Light: White, Blue, Green, Red
- **Amplified Speaker:** 10 watt amplifier and speaker
- Self-starting Generator for extra large loads

Cameras, Horns, or Radar

We power your favorite combination of IP cameras and IP devices.

Avigilon, Axis, Bosch, FLIR, Genetec, Hanwha, i-Pro, Mobotix, Pelco, Rhombus, Verkada, Vivotek, and many more

Custom configurations are available for cameras not listed above.

Telescopic Mast

The telescopic mast system features an EZ-Lift winch for rapid deployment.

Type: Square tube steel, 4 section, galvanized finish with powder coat base

Total Height: 20' (6m)

Lift System: EZ-Lift manual winch

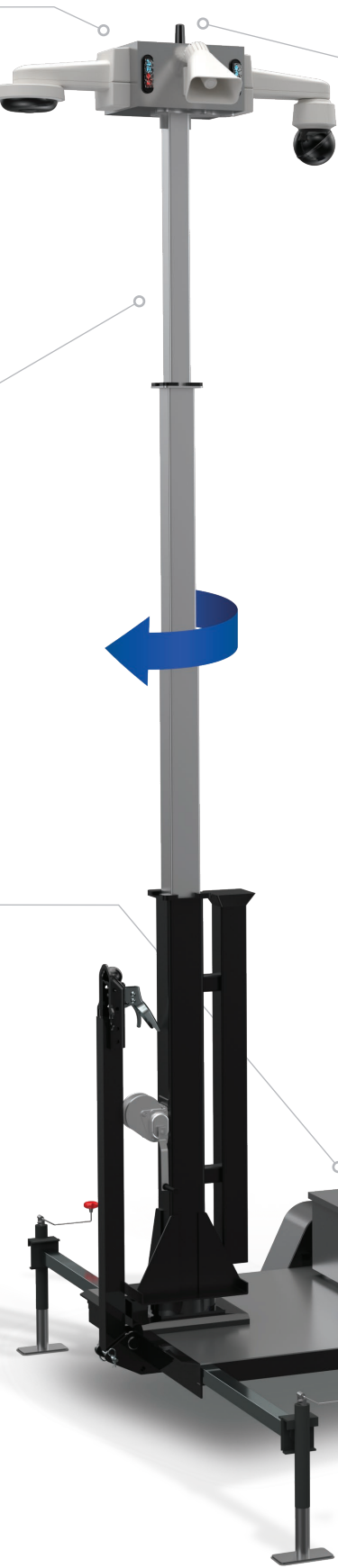
Max Payload: 165 lbs (75 Kg)

Enclosure

The enclosure is made of **5052 Aircraft Grade Aluminum**, and is extremely corrosion resistant.

Electronics: All **Solstice Trailer** systems are comprised of high quality, industrial grade components and can withstand the most extreme environments. Components include but are not limited to: charging circuit, overload protection, and power supplies.

Batteries: Deep Cycle Gel standard with Lithium available. Absorbent glass mat, sealed lead acid. The battery bank and solar array are sized to provide continuous power **365** days a year.



Wireless

Choose your wireless radio from your favorite provider.

Point to Point	Point to Multipoint	Mesh	Cellular*	Satellite
2.4 GHz	2.4 GHz	2.4 GHz	5G	Starlink ©
5.8 GHz	5.8 GHz	5.8 GHz	4G / LTE	

**System is designed for your preferred wireless solution.*

Solar Panels

Solar panels can range depending on the need for smaller or larger panels.

- Mono-crystalline silicon solar cell
- High transparency, low-iron, tempered glass
- Heavy-duty, anodized frames
- Rugged design to withstand high wind pressure, hail, and snow load

Solar panels vary in size and wattage based on geographical location and load.

Solstice H-Base

Forklift moveable solar unit

The **Solstice H-Base** camera system is an extremely robust mobile solution, providing a stable base for security on construction sites.

The fork pockets make for easy relocation as your site changes throughout the construction phase.

The **Solstice H-Base** allows for the widest possible range of deployment locations made possible by the leveling jacks. The Solstice H-Base is our most cost effective mobile solution.

As with all Sun Surveillance systems, our **Solstice H-Base** systems are backed by our performance warranty, giving you the confidence that your system will be available when you need it most.

Options

- Remote Health Monitoring
- GPS Location
- IR Illuminator: Various distances and angles
- Strobe Light: White, Blue, Green, Red
- **Amplified Speaker:** 10 watt amplifier and speaker
- Solar Lighting for lighting applications

Camera Pole

The sectional quick deploy tilt up pole is easy enough for one person to setup, yet strong enough to provide steady images for your analytic cameras.

Hinged and Sectional Aluminum Pole:

The pole hinges at the base for an extremely easy installation. The hinged pole comes in a standard size: 14' x 4.5" diameter (4.2m x 114mm)

Height: 14' (4m)

Lift System: One person tilt up

Max Payload: 77 lbs (35 Kg)

Enclosure

The enclosure is made of **5052 Aircraft Grade Aluminum**, and is extremely corrosion resistant.

Electronics: All **Solstice H-Base** systems are comprised of high quality, industrial grade components and can withstand the most extreme environments.

Components include but are not limited to: charging circuit, overload protection, and power supplies.

Batteries: Deep Cycle Gel standard with Lithium available. Absorbent glass mat, sealed lead acid. The battery bank and solar array are sized to provide continuous power **365** days a year.



Wireless

Choose your wireless radio from your favorite provider.

Point to Point	Point to Multipoint	Mesh	Cellular*	Satellite
2.4 GHz	2.4 GHz	2.4 GHz	5G	Starlink ©
5.8 GHz	5.8 GHz	5.8 GHz	4G / LTE	

**System is designed for your preferred wireless solution.*

Cameras, Horns, or Radar

We power your favorite combination of IP cameras and IP devices.

Avigilon, Axis, Bosch, FLIR, Genetec, Hanwha, i-Pro, Mobotix, Pelco, Rhombus, Verkada, Vivotek, and many more

Custom configurations are available for cameras not listed above.

Solar Panels

Solar panels can range depending on the need for smaller or larger panels.

- Mono-crystalline silicon solar cell
- High transparency, low-iron, tempered glass
- Heavy-duty, anodized frames
- Rugged design to withstand high wind pressure, hail, and snow load

Solar panels vary in size and wattage based on geographical location and load.

418 Old Greenville Rd
Spartanburg, SC 29301

SunSurveillance.com
(864) 699-9911

